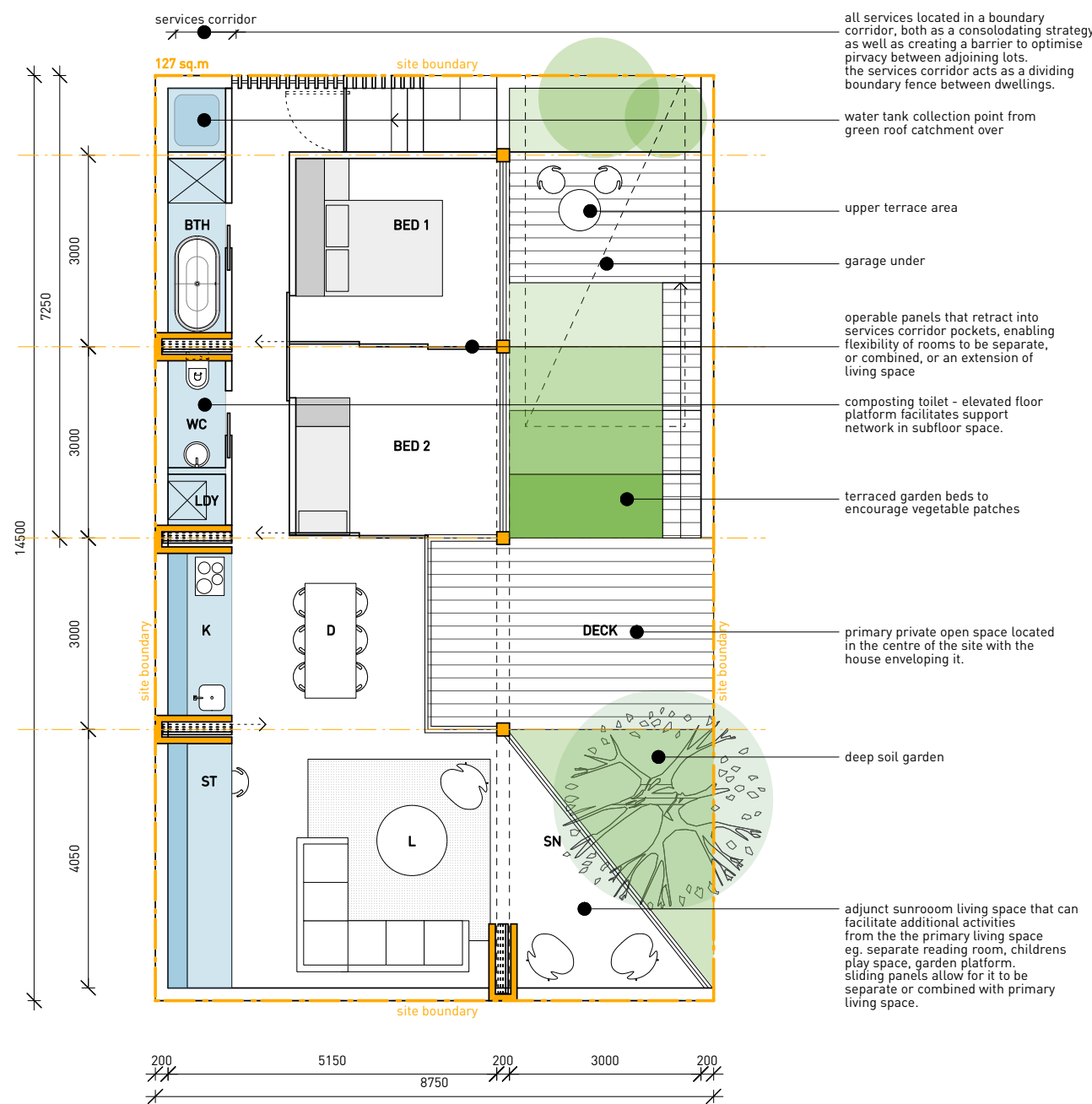
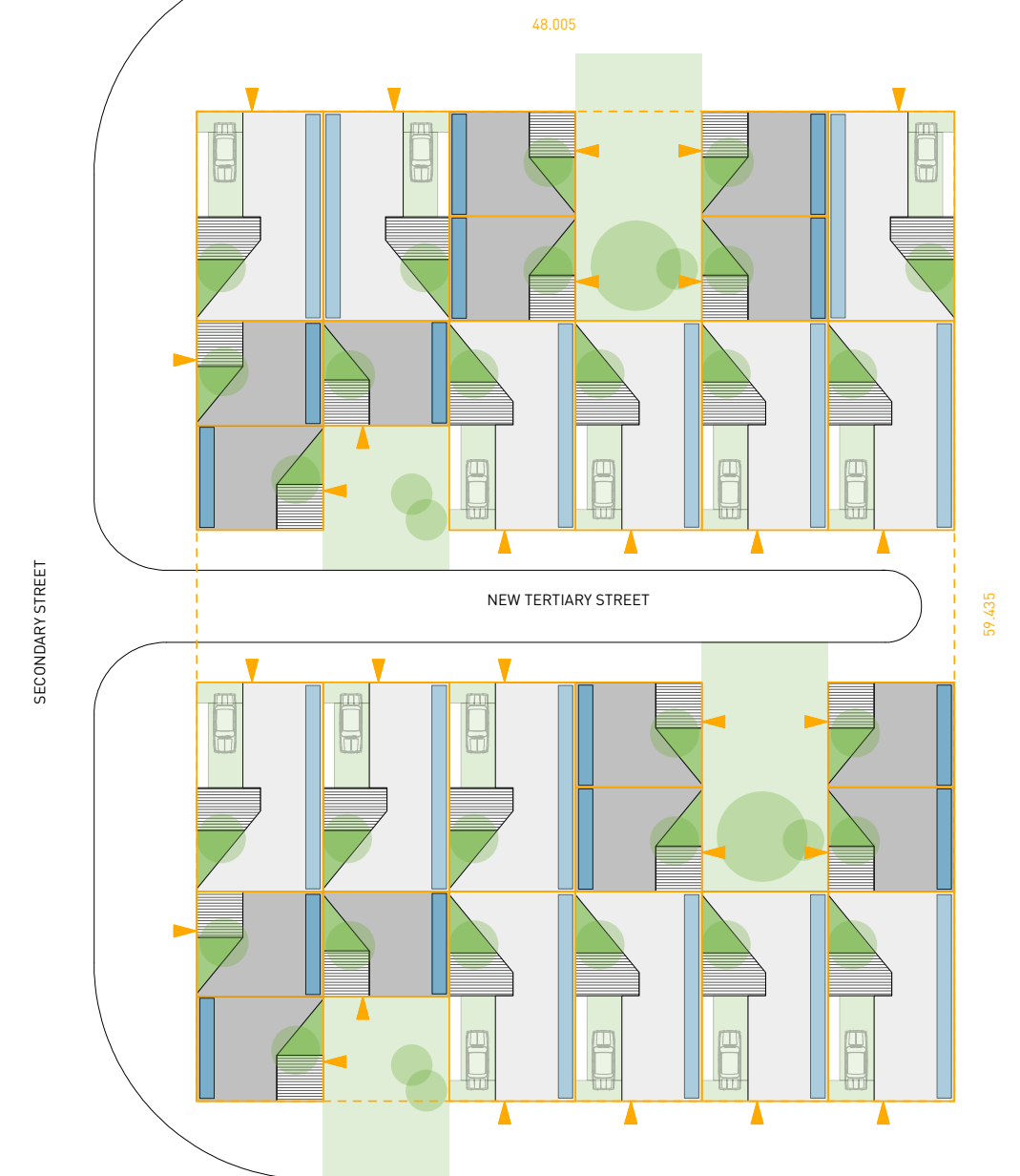


family - double storey



family - single storey

14 x 127 sq.m + 14 x 63.5 sqm SITES



SECONDARY STREET

127 SITE	single storey						double storey					
	affordable			market			affordable			market		
	area	rate/sq.m	cost	area	rate/sq.m	cost	area	rate/sq.m	cost	area	rate/sq.m	cost
land area	127	1000	\$127,000.00	127	1000	\$127,000.00	127	1000	\$127,000.00	127	1000	\$127,000.00
house area	81	2400	\$194,400.00	81	3500	\$283,500.00	108	2400	\$259,200.00	108	3500	\$378,000.00
external area	39	300	\$11,700.00	39	1200	\$46,800.00	39	300	\$11,700.00	39	1200	\$46,800.00
TOTALS			\$333,100.00			\$457,300.00			\$397,900.00			\$551,800.00
EXTRAS OVER												
roof garden	24.5	300	\$7,350.00	24.5	300	\$7,350.00	24.5	300	\$7,350.00	24.5	300	\$7,350.00
solar roof sheeting	21	200	\$4,200.00	21	200	\$4,200.00	21	200	\$4,200.00	21	200	\$4,200.00
composting toilets	1	2975	\$2,975.00	1	2975	\$2,975.00	2	2975	\$5,950.00	2	2975	\$5,950.00
SUBTOTAL			\$14,525.00			\$14,525.00			\$17,500.00			\$17,500.00

Note: Rate differences between 'affordable' and 'market' reflect a higher level of all fittings, fixtures, window systems and internal finishes. Extras over are optional.

