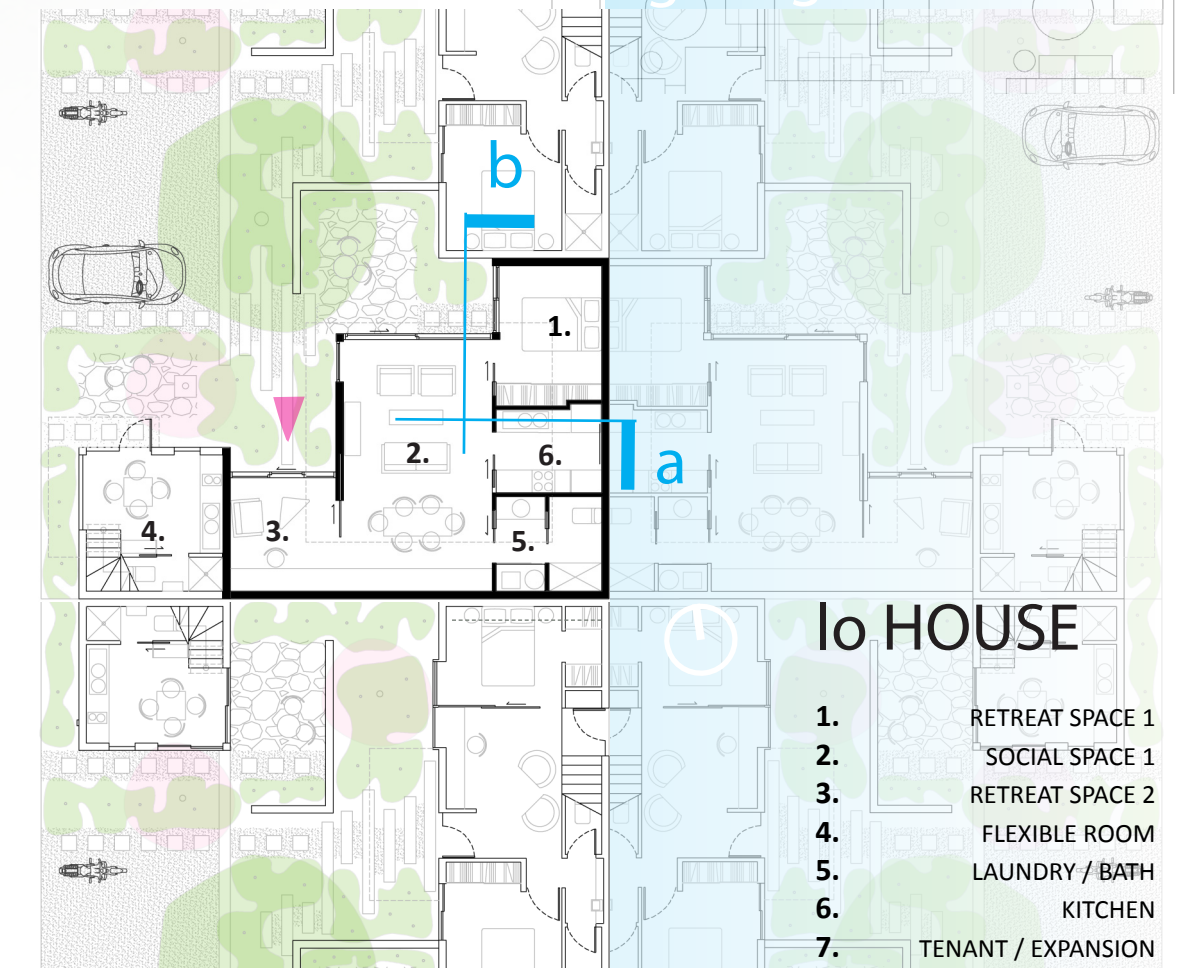


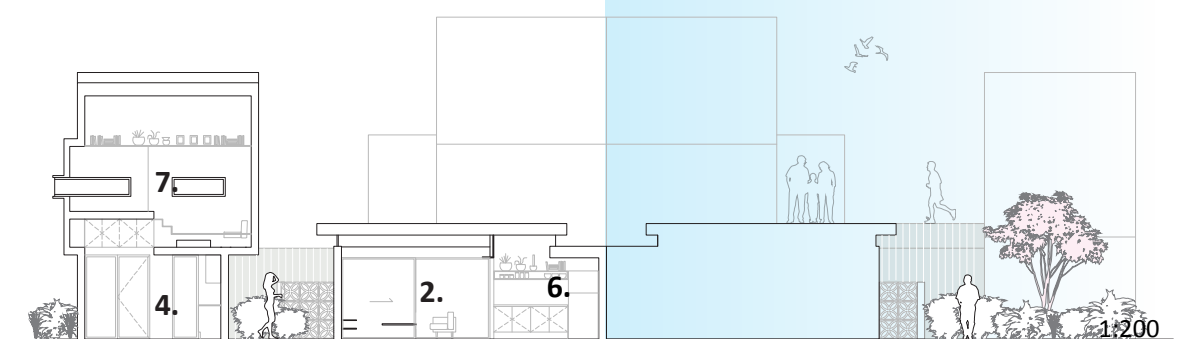
lo House is an accessible single level living courtyard house facing north. Entry is via a flexible study or home office space. It shares party walls on three sides and has hi and lo level openable windows for cross ventilation. It's footprint can expand into the HI-Lo house adjacent or this can remain separate tenant / studio, carers flat or workshop space.

No. houses: 7
Block Size: 100sqm
House Size: 70sqm
Approx Build \$: \$90K
Private Open Space: 10sqm
Public Open Space: 10sqm

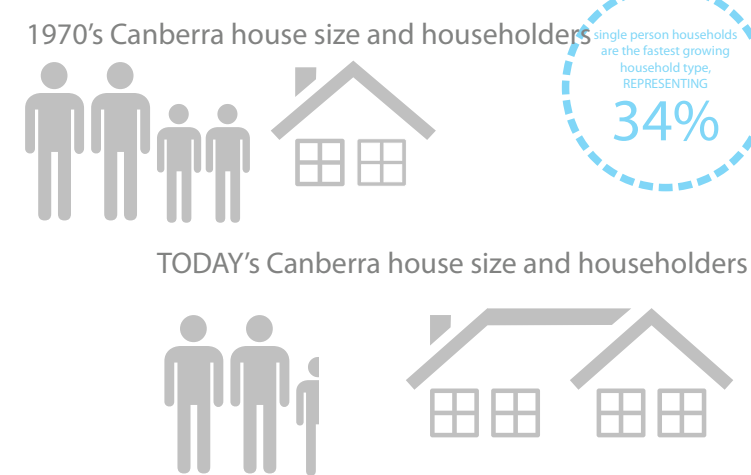
figure ground



lo PLAN

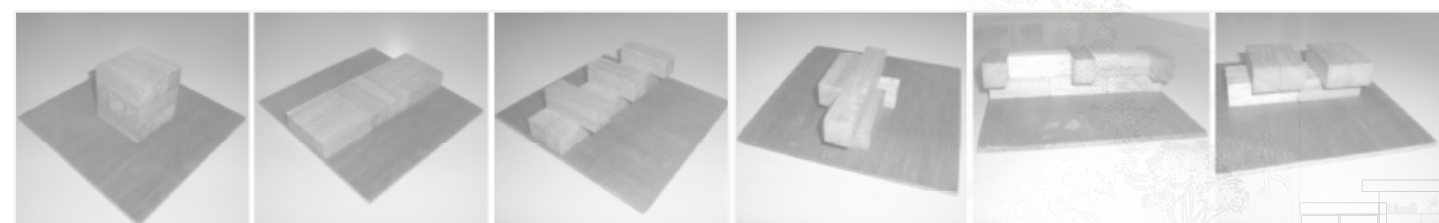


SECTION a



The challenges of growing house size and suburban sprawl are well documented in the research - however for all the benefits that medium density housing offers in Canberra - quality, useability and neighborhood character issues persist. This design response is offered as part of a wider research and practice undertaking by the authors. It explores the contribution of medium density compact housing to a sustainable built environment in Canberra, but with a particular focus on occupant behaviours and design. The team comprises architect, landscape architect, builder and environmental engineer. This scheme is organised around a central landscaped spine and communal north facing precinct "heart" - both across two levels - the HI and the lo level. Cars access the precinct but share space with pedestrian paths and private garden space. There are 2 block sizes - 10x10 and 4x10m. The typical cluster of blocks is a HI, a lo and two HI-LO houses, and this offers many permutations for expansion and contraction of household occupant numbers, hobbies, home and work life over time. Houses use standard timber frame construction; up to 2 storeys plus a loft. Lightweight insulated building envelope with thermal mass internally. Upper level decks and walkways are lightweight and where applicable are seperated from the metal deck roof of the dwelling below. Many walls are shared and single level "podium" forms help the houses interleave as infill within existing neighborhoods, while articulation is of slender skillion roof forms. These offer screening between dwellings, while the forms limit overshadowing. The result is a medium density precinct with landscape weaved throughout.

HI_{LO} houses



New Experimental Architectural Typologies

