



Australian
Institute of
Architects

NEW SOUTH WALES CHAPTER NEWS



FEATURE

NEWS

WHAT'S ON?

MEMBERSHIP

NOTICE BOARD

SPONSOR NEWS

From the President



Over the next month, Sydney Opera House plays host to a couple of significant events for the profession. On 25 October, the Architecture and Design Symposium brings together exceptional architects, designers and artists from Denmark and Australia for a meeting of minds like no other.

[READ MORE](#)

Feature



Architecture and Design Symposium - Speaker profile

The Architecture and Design Symposium is a unique day-long event that brings together exciting architects and designers from Denmark and Australia on the occasion of Sydney Opera House's 40th Anniversary. This week we profile Danish architect Dan Stubbergaard of COBE. Image: Porsgrunn Maritime Museum by COBE.

[READ MORE](#)

News



URBAN IMPACTS – on Tonight!

Andrew Maynard from Andrew Maynard Architects, Melbourne
Introduction by **Adam Haddow**, SJB Architects.
6.00pm for 6.30pm Tuesday 8 October

Bookings open until 5pm today - [Book Now](#).

This event has been generously sponsored by [SMEG Appliances](#).

Tusculum, 3 Manning Street, Potts Point.
\$15 member | \$20 non-member.



Gold Medal for Architecture Talk

The Gold Medal is the Institute's highest individual architectural honor.

The 2013 Gold Medal for Architecture was awarded to Peter Wilson. Download the [jury citation](#).

SOLD OUT



Archi**TECH** Lunch: Partners Energy Newcastle Division

SOHO on Darby Street
1.00pm -2.00pm Wednesday 9 October

FREE for Members, [Register online](#).

Archi**PROCESS**

CD: Contract Documentation

Examining the stages involved in realising good architecture.

9.00am - 12.30pm Thursday 10 October

Speakers:

David Jagers, Durbach Block Jagers.

Anthony Nolan, Kennedy Associates.

Troy Uleman, Building Studio Architects.

3 formal CPD points

\$75 member | \$110 non-member.

Tusculum, 3 Manning Street, Potts Point.

[Register online](#).

Archi**TECH**

Steel

Product innovations, materials & technical specifications.

9.00am – 11:00am Thursday 31 October

Speakers:

Michael Waterford, Technical Specialist – Bluescope.

Mike Celeban, Product Development Manager & engineer- Lysaght Products.

Glen Roberts, National Development Manager - Bondor.

3 formal CPD points
Free for Members & SONA members
\$35 non-members | \$20 student non-members.
Tusculum, 3 Manning Street, Potts Point.

[Register online.](#)

Contact: Eleni Ragogo (02) 9246 4011
oreleni.ragogo@architecture.com.au.

To download the September - October 2013 CPD calendar [click here](#).



**The Dollars and Sense of Building for Bikes
Presented by BIKESydney, Short
Communications**

6.00pm to 9.00pm Tuesday 22 October
Tusculum, 3 Manning Street, Potts Point

The evening will showcase global and local examples of how bicycle-oriented development can create the kinds of places people want to move to and that developers want to build. Organised by [BIKESydney, Short Communications](#) and sponsored by OmaFiets.

Presenters:

Dr Steven Fleming is an architect, academic, and writer with a PhD in philosophy and architecture. He leads a unique design studio looking at creative architectural responses to cycling and has lectured in UK, Netherlands and the US on the concept of "cycle-space".

Emlyn Keane, Head of Property Management and Sustainable Performance at AMP Capital Investors, will outline what they are doing to promote cycle-friendly development as a major owner of commercial CBD office buildings. Emlyn will showcase some new facilities and the economic drivers behind their creation.

[Click here](#) for further information.

What's on

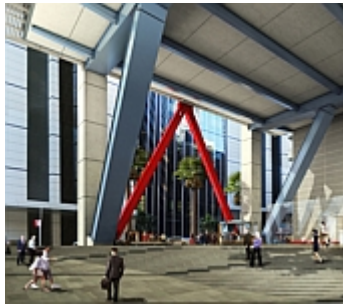


National Architecture Awards 2013 - tickets selling fast!

Thu 7 Nov Sydney Opera House

Limited tickets left for the dinner component of the National Awards be sure to get in quick to avoid missing out. Join us for the night-of-nights of Australian architecture, celebrating the best and boldest designs of the year in Australia's most celebrated work of architecture!

[READ MORE](#)

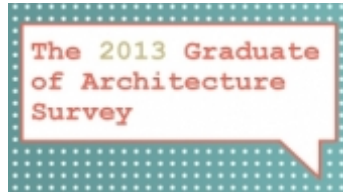


8 Chifley Square 6.00pm Wednesday 9 October

Ed Lippmann will discuss the new office tower at 8 Chifley Square, designed in collaboration with Rogers Stirk Harbour + Partners and its impact on Sydney as a global city.

State Library Metcalfe Auditorium, ground floor, Macquarie wing.

[Click here](#) for further information.



2013 Graduate of Architecture Survey

[Complete the survey](#) and provide us with valuable information about your experience as an architecture graduate. Know other graduates who'd like to contribute?

Tell your friends. Closes 17 October 5.00pm.



Volunteers - Sydney Architecture Festival needs you!

If you are interested in architecture and would like to be part of this year's Festival, we would love to hear from you!

There are a wide range of activities needing volunteers, so if you would like to be part of taking this annual celebration of architecture to the community, please register your interest by emailing info@sydneyarchitecturefestival.org.

If you have already registered with us please note there is a briefing at Tusculum 6.00pm Wednesday 16 October.

Visit the Sydney Architecture Festival [website](#) for more information.

Competitions & Opportunities



Closing soon - EOIs for 2015 Conference!

Are you interested in the role of Creative Director for the 2015 National Architecture Conference? The Institute is seeking expressions of interest from inventive and enthusiastic individuals, practices, schools of architecture, or collaborative teams are encouraged to submit their expressions of interest.

[READ MORE](#)

Notice Board



Grand Designs Live - special offer!

Meet your favourite TV celebrity experts, including host of Grand Designs UK, Kevin McCloud. Plus visit 150 premium exhibitors and receive tips and inspiration for your own grand design. Receive \$10 off general entry to the show (enter code word DESIGN13 in the 'Grand Offer' field at ticketmaster.com.au/grand).

[READ MORE](#)



Sandcastles

Once again, the Institute is working with the team behind *Sandcastles* to present some of the best architectural work in this country to a wide audience. This week the show features Cliff Face House by Fergus Scott Architects and Peter Stuchbury Architecture. Image by Michael Nicholson.

[READ MORE](#)

Membership



A+

Have you been thinking about A+? Want to know more? Upgrade your membership to A+ and gain access to heaps of great benefits.

[READ MORE](#)

Sponsor news



BIM survey

Autodesk is pleased to announce its participation in McGraw-Hill's BIM Adoption and Value Survey for Australia and New Zealand and encourages you to complete the survey, aimed at both BIM users and non-users.

[READ MORE](#)



Dulux is looking for homes

Dulux is refreshing their image library and want to feature some of Australia's best homes. If you have an amazing Australian home that has been completed using Dulux products then your projects could be featured throughout the new Dulux Colour collateral

[READ MORE](#)



Next generation of cloud-based BIM services

Obayashi Corporation, together with NEC and GRAPHISOFT SE has successfully completed its Smart BIM Cloud pilot project, which allows even better integration and information sharing - essential to spreading BIM in the construction industry.

[READ MORE](#)

View more state news:

[VIC](#) | [NSW](#) | [WA](#) | [QLD](#) | [NT](#) | [SA](#) | [TAS](#) | [ACT](#)

Contact Us

New South Wales Chapter

Tusculum
3 Manning Street
Potts Point, NSW 2011
1800 770 617

nsw@architecture.com.au

architecture.com.au/nsw

Major State Sponsor



Principal Corporate Partner



Supporting Corporate Partners



Media Supporter



Upcoming event



Visit architecture.com.au

All content © 2013 Australian Institute of Architects



[Disclaimer](#) | [Privacy Policy](#)

While the Institute considers it important to publicise events/competitions of significance to members, it does so in good faith, does not represent that the Institute endorses the event/competition unless this is stated, and does not accept responsibility for the conduct of the event/competition process or value of the event/competition to participants.

You are receiving this email because you signed up to our email list through one of our member channels. If you would prefer not to receive emails of this nature, please [unsubscribe](#).