

From the National President



On Saturday we had our say on Australia's future through casting our votes in the federal election. We now have a new Coalition government with a majority of seats in the House of Representatives, although there will be no change to the Senate's make up until July next year.

[READ MORE](#)

From the Chapter President



24 Illawong Crescent

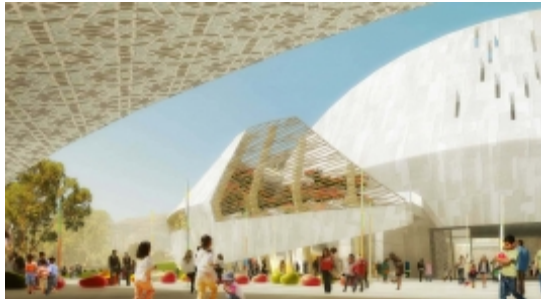
The Institute has appealed the decision to de-list 24 Illawong Crescent from the Tasmanian Heritage Register. The house, designed by Ray Heffernan in 1962, was 1 of 60 buildings nominated to the National Estate by the Institute following a state-wide survey in the 1990's. The Institute is seeking members with an interest in the work of Ray Heffernan to meet to discuss the significance of his residential designs in order to provide an understanding of the importance of the house at Illawong Crescent.

Please email Jennifer Nichols jennifer.nichols@architecture.com.au by Friday September 14 to express an interest or to provide assistance with photographs, drawings etc. or other documents on Ray Heffernan's architecture.

Industry update - Access Premises Standards

Earlier this year, we held a roundtable to discuss members' concerns about Premises Standards [Disability (Access to Premises-Building) Standards 2010]. The Commonwealth has committed to completing a review of the legislation by May 2016. In order to contribute to the review and determine whether it has had a detrimental effect on architects, we need your input. We'd like to hear from you about any problems you may have had with the legislation. Email [Bron Hill](#) with your experiences.

Feature



Architecture and Design Symposium - Speaker profiles

To celebrate the 40th anniversary of the opening of Sydney Opera House, this one-day event brings together Danish and Australian architects and designers to discuss the contemporary role of architecture and design in shaping our collective cultural imaginations. This is a rare opportunity to hear from some of Denmark's most exciting architectural talents, including **Johannes Molander Pedersen** and **Morten Rask Gregersen** from NORD Architects and **Mette Kynne Frandsen** from Henning Larsen.

Image: Massar Childrens Discovery Centre, Henning Larsen Architects

[READ MORE](#)



What's on



Kevin Mark Low - This week only!

Following his role as a keynote speaker for Spirit of Place in Cairns, Kevin Low is touring nationally as the next face of the renowned International Speaker Series.

[READ MORE](#)



National Architecture Awards 2013

**Thu 7 Nov
Sydney Opera House**

The National Architecture Awards recognise and celebrate outstanding achievements and excellence in architecture. Join us for the night-of-nights of Australian architecture. Tickets on sale soon!

[READ MORE](#)

GRAPHISOFT.
ARCHICAD

Industry Foundation Classes (IFC) Training

Graphisoft Australia is pleased to present the first of a national series of two-day IFC Training Courses. The course will be presented by John Mitchell, Chairman of Building SMART Australasia Chapter.

[READ MORE](#)



NSS5 Managing Projects for Success

About the Seminar/learning outcomes:

This seminar will develop project planning and project management skills for architects to help them become "project leaders" and contribute to the success of their team, project delivery and sustainability of their practice.

Topics include the project leader's role in success, financial and resource management, planning for success and managing project risk.

When: 12:00-2:00pm, Tuesday 10 September

Where: 1/19a Hunter Street

Cost: M \$66.00 | A+ \$59.00 | NM \$96.00 | GM \$40.00 | SONA \$20.00 | SNM \$30.00 |

[Register online now](#)

[READ MORE](#)



Pictures in the Pub, Awards in Review

What: This event is open to the public, so please invite your friends. Showcasing the professions, exemplary Tasmanian design.

When: 6:00 – 8:00pm, Wednesday 18th September 2013

Where: Chapter Office, 1/19a Hunter Street, Hobart

[READ MORE](#)



2013 Architecture Awards, Burnie Exhibition

The Makers' Workshop
 September 16-29
 Opening night Friday September 20
 6:00 - 7:00pm

[Register for this event.](#)

READ MORE



Elements, Holt and Looby

What: Elements – singular, scalar building components: stairs, columns, floor plates, windows, walls, and ceilings.

Each when individually assessed, may seem to be less than significant, or the least notable or immediately identifiable as potentially theoretical constructs; but each is nevertheless essential to the physical nature of building. That is not to say these elements should become token gestures viewed purely in isolation. Instead, each element is viewed across a body of work, which allows for analyses and a criticality on something much larger: the discipline.

Speaker: Michael Holt, the editor for Architectural Review Asia Pacific, and Marissa Looby an architectural designer and writer, both are graduates of the Graduate School of Architecture, Planning and Preservation (GSAPP), Columbia University.

Hobart:
 12:30 - 2:00pm, Friday 20th September 2013
 Where: Australian Institute of Architects Chapter Office, 1/19a Hunter Street Hobart TAS
[Register for the Hobart event](#)

Launceston:
 6:00 - 7:30pm Friday 20th September 2013
 Where: UTAS School of Architecture and Design, Launceston
[Register for the Launceston event.](#)

READ MORE

Peter Wilson 2013 Gold Medallist Australian Institute of Architects

Gold Medallist Peter Wilson

Peter Wilson has been awarded the 2013 Gold Medal in recognition of his distinguished services in the execution of an outstanding body of architectural works of great distinction widely published and exhibited over more than thirty years and for his long-standing contribution to the development of architectural drawing as a tool of representation and research.

When: 6:00-7:30pm, Wednesday 9 October

Where: The Henry Jones Art Hotel

[READ MORE](#)

Competitions & opportunities



Leadership in Sustainability Prize

Entries close Thursday!

This prize recognises individuals and/or groups demonstrating exceptional leadership and an outstanding contribution to the advancement of sustainability of the built environment.

[READ MORE](#)



Colorbond Steel Student Biennale

Stage One entries are now open for the Biennale, now in its 25th year, which represents the profession's recognition of quality in design by students of architecture.

[READ MORE](#)



2015 National Architecture Conference – Call for Creative Director

The Institute is now seeking expressions of interest for the role of the Creative Director for the 2015 National Architecture Conference. Held annually, the conference is a major event of the Institute and is attended by over a thousand delegates.

[READ MORE](#)

Notice board



Grand Designs - An Evening with Kevin McCloud

In this premiere two hour event Kevin McCloud will look back on the architectural and human stories that have most fascinated him over his long involvement with the show; examining the challenges and pitfalls of designing and building your dream home.

[READ MORE](#)

The Other Hemisphere

In 2014, design curator Sarah K will once again take an exhibition of innovative new Australian and New Zealand design to Milan during the Salone del Mobile and Fuori Salone for Milan Design Week. Designers are asked to respond to the theme 'simplified' interpreting this term in their own way. Entries close 30 Sep.

[READ MORE](#)

The Role of the Superintendent

The superintendent's role is a complex one. This intensive and interactive training program teaches you how to confidently manage the various duties, the dual roles of the superintendent, and how to avoid common legal traps. This one day CPD is the only course in Australia that specifically addresses the legal principles which underpin the role of the superintendent.

Sep 17, 8.30am-5pm
Salamanca Square, Hobart

[READ MORE](#)

Industry update - premises standards

Earlier this year, we held a roundtable to discuss members' concerns about Premises Standards [Disability (Access to Premises-Building) Standards 2010]. The Commonwealth has committed to completing a review of the legislation by May 2016. In order to contribute to the review and determine whether it has had a detrimental effect on architects, we need your input. We'd like to hear from you about any problems you may have had with the legislation. Email [Bron Hill](mailto:Bron.Hill) with your experiences.

Biztro Sessions for Architects

Micro and small businesses operating in the Creative Industries can now discuss their challenges in a free and private 1 hour session with a CIIC Business Adviser. The CIIC Biztro is an initiative of the Creative Industries Innovation Centre (CIIC). Aspects of your business that you may choose to discuss include strategic planning, finances, human resources, marketing and intellectual property among others.

[READ MORE](#)

WorkSafe Tasmania Month 2013 – 30 Sept to 1 Nov

There are over 160 free events covering safety, wellbeing and return to work. Many are specific to industry needs and operating requirements, and focus on the new national codes of practice.

Building practitioners can earn CPD points during WorkSafe Month. CPD Points can be claimed on all WorkSafe Month events. Simply retain your registration or certificate of attendance.

The quickest and easiest way to register or to get further information is to go to the WorkSafe Tasmania website www.worksafe.tas.gov.au

New Director of Building Control appointed

Mr Dale Webster has been appointed under the Building Act 2000 as the Director of Building Control, to succeed Ms Kerrie Crowder.

Mr Webster took up his appointment on 26th August. He has previously held senior management positions within the Tasmanian Department of Justice. Mr Webster has also been appointed as the Administrator of Occupational Licensing under the Occupational Licensing Act 2005 and the Security of Payments Official under the Building and Construction Industry Security of Payment 2009.

Boosting your stars

This workshop which will provide an opportunity for the property industry to become informed about:

- the broad range of opportunities and benefits including increased property values for green buildings,
- areas for improvement in air conditioning and lighting system refurbishments in existing buildings,
- opportunities for on-site generation and finishing off with a number of case studies of energy efficiency refurbishment in buildings and
- the benefits achieved to provide some "real life" context of the opportunities that can exist in adapting existing stock to suit climate change and to

READ MORE

reduce the non-residential built environments carbon footprint.
Full day course
When: 23 Sep 2013 8.30am - 4.00pm
Where: Salamanca Inn, 10 Gladstone Street, Hobart.
PCA Contact: Jennifer Roberts
Phone: 03 9650 8300

READ MORE

Industry Update

Please find attached:
A Building and Plumbing News Update.

READ MORE

Industry Update

Please find attached:
Copy of the amended Director's Specified List (PDF).

READ MORE

Membership



HR Plus

HR Plus is an architectural human resources and industrial relations information service that gives A+ members and Graduate members access to expert advice. In addition, Wentworth Advantage provides informative articles for our members. These are published on Acumen. This month [Crackdown on bullying - new law](#).

READ MORE

Sponsor news



2013 WoodSolutions Timber Study Tour

Germany, Austria, Switzerland - a week of inspiration, information and fun in December for only \$3850*. Join other industry professionals to



Australian Timber Awards - People's Choice Award

Voting has opened for the [2013 People's Choice Award](#)! Members of the public may view all entries and vote online. There is a huge field of entries



Bondor's InsulLiving®

Bondor's revolutionary InsulLiving® house building system has achieved CodeMark accreditation, ensuring acceptance by regulatory bodies in Australia and New Zealand.

visit landmark projects and meet some of the people behind them.

[READ MORE](#)

this year, so we're certain you'll find a project that suits your taste. [View the entries and vote now!](#)

[READ MORE](#)

What's happening at other chapters:

[VIC](#) | [NSW](#) | [WA](#) | [QLD](#) | [NT](#) | [SA](#) | [TAS](#) | [ACT](#)

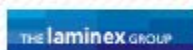
Contact Us

Tasmanian Chapter
Level 1/19a Hunter Street
Hobart, Tasmania 7000
GPO Box 1139
Hobart, Tasmania 7000
1800 770 617
act@architecture.com.au
architecture.com.au/act

Sponsors



Supporting State Sponsors



Principal Corporate Partner



Supporting Corporate Partners



Media Supporter



Upcoming event



Visit architecture.com.au



All content © 2013 Australian Institute of Architects

[Disclaimer](#) | [Privacy Policy](#)

While the Institute considers it important to publicise events/competitions of significance to members, it does so in good faith, does not represent that the Institute endorses the event/competition unless this is stated, and does not accept responsibility for the conduct of the event/competition process or value of the event/competition to participants.

You are receiving this email because you signed up to our email list through one of our member channels. If you would prefer not to receive emails of this nature, please [unsubscribe](#).