

Liminal Space

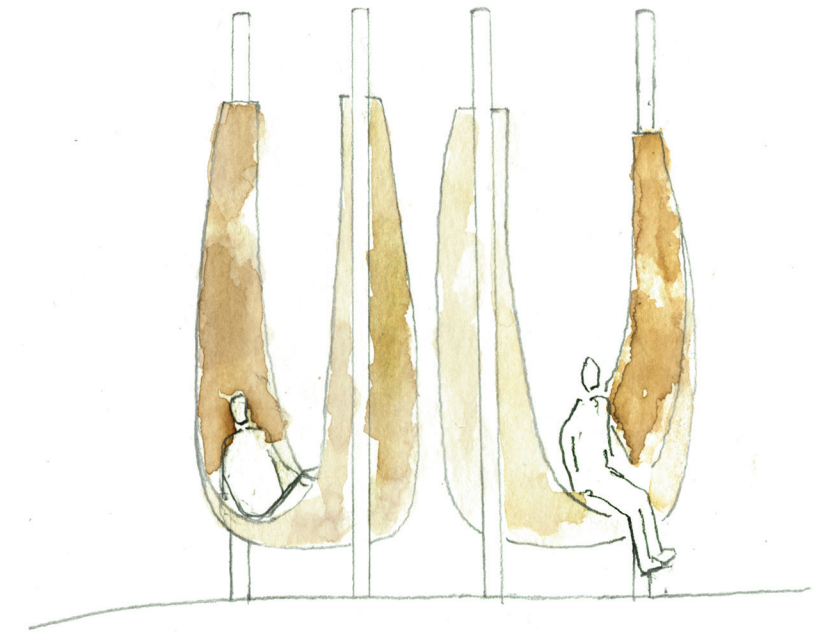
A space of transition between introverts and extraverts



Extravert



Transition



Introvert

Cater to a range of social situations

There are different levels of interaction, moving from introverted to extroverted.
A transition space bridges them together, forming a spectrum of inclusion.



Wind through fabric



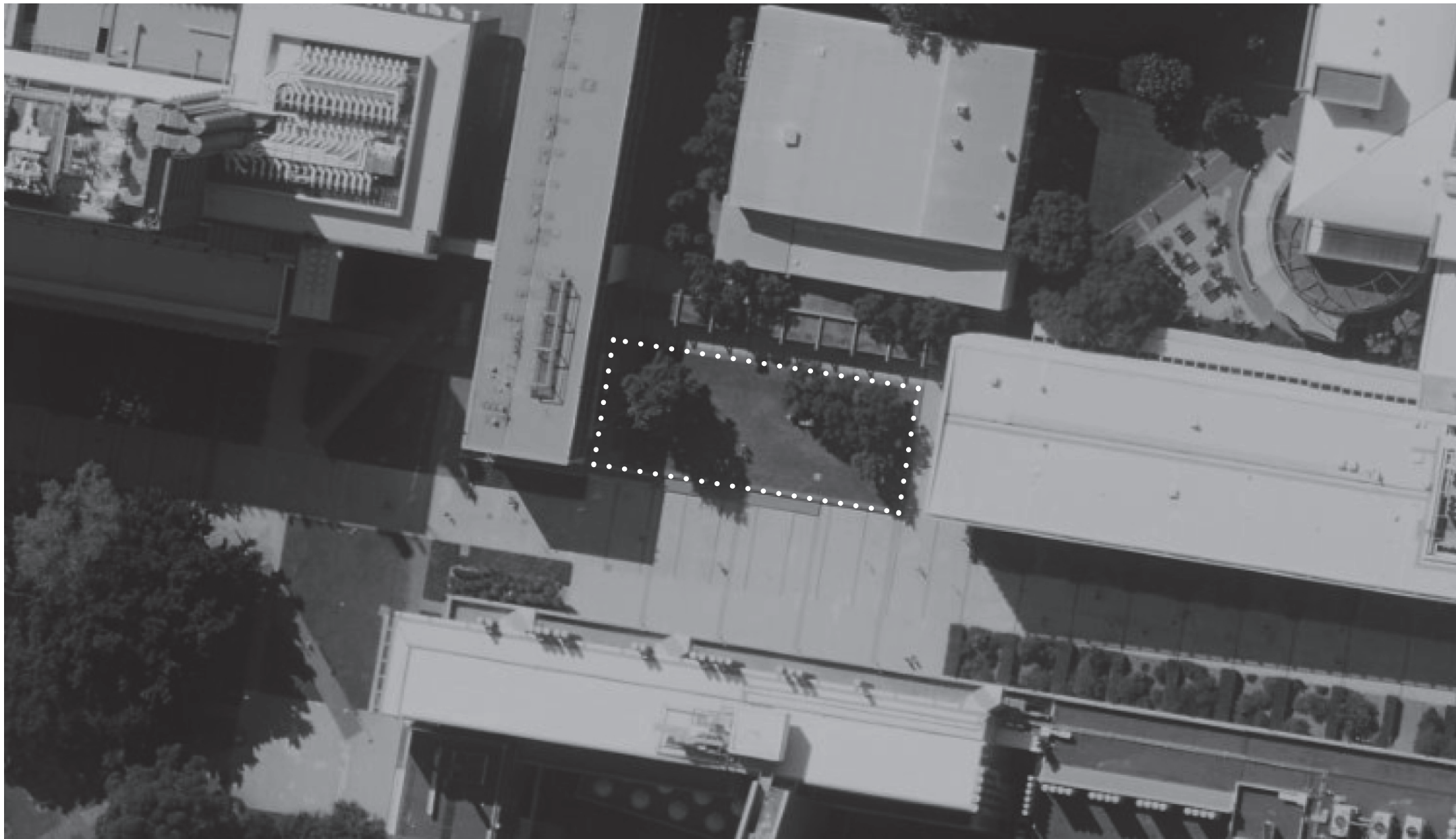
Reflection



Rain Droplets

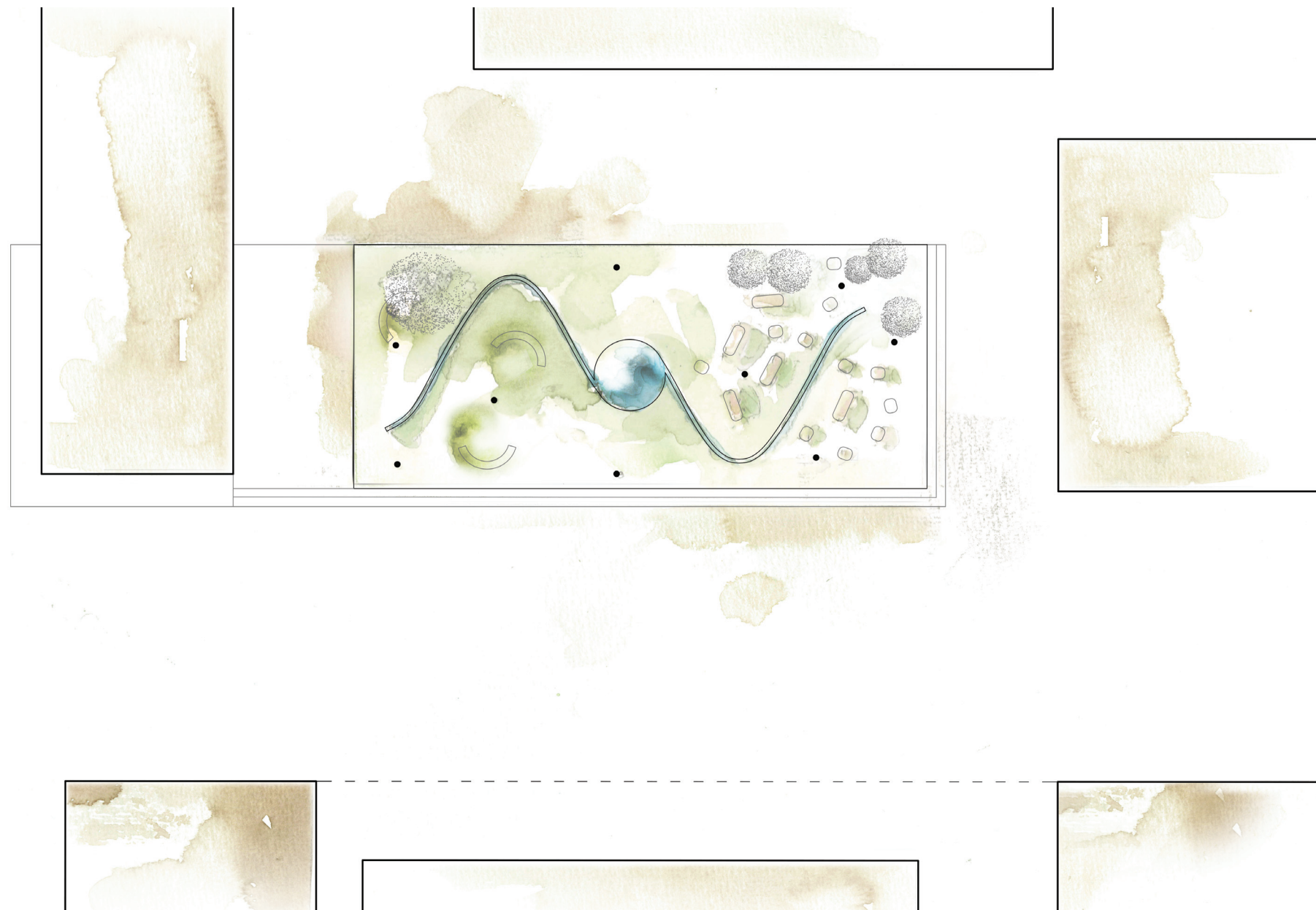
Sensory based, a calm space

Sensory experience based on nature. The wind, sky and water, each providing a different tranquil effect.



A moment of pause

The site is situated along the main walkway of UNSW, with 4 surrounding buildings defining a spatial envelope. The design is intended to be a moment of pause in the busyness of student life.



The flow of water

The water channel leads people inwards at both ends of the site. Adjacent to the water channel is a gradient of various social settings. The channel then merges together at the central reflection pond, forming a focal point for gathering.

