



D.A.M ARCHITECTS

DARRYL, AARON, MARION

SUPERSTUDIO 2018

UNIVERSITY OF TASMANIA



INVERESK SITE BOUNDARY

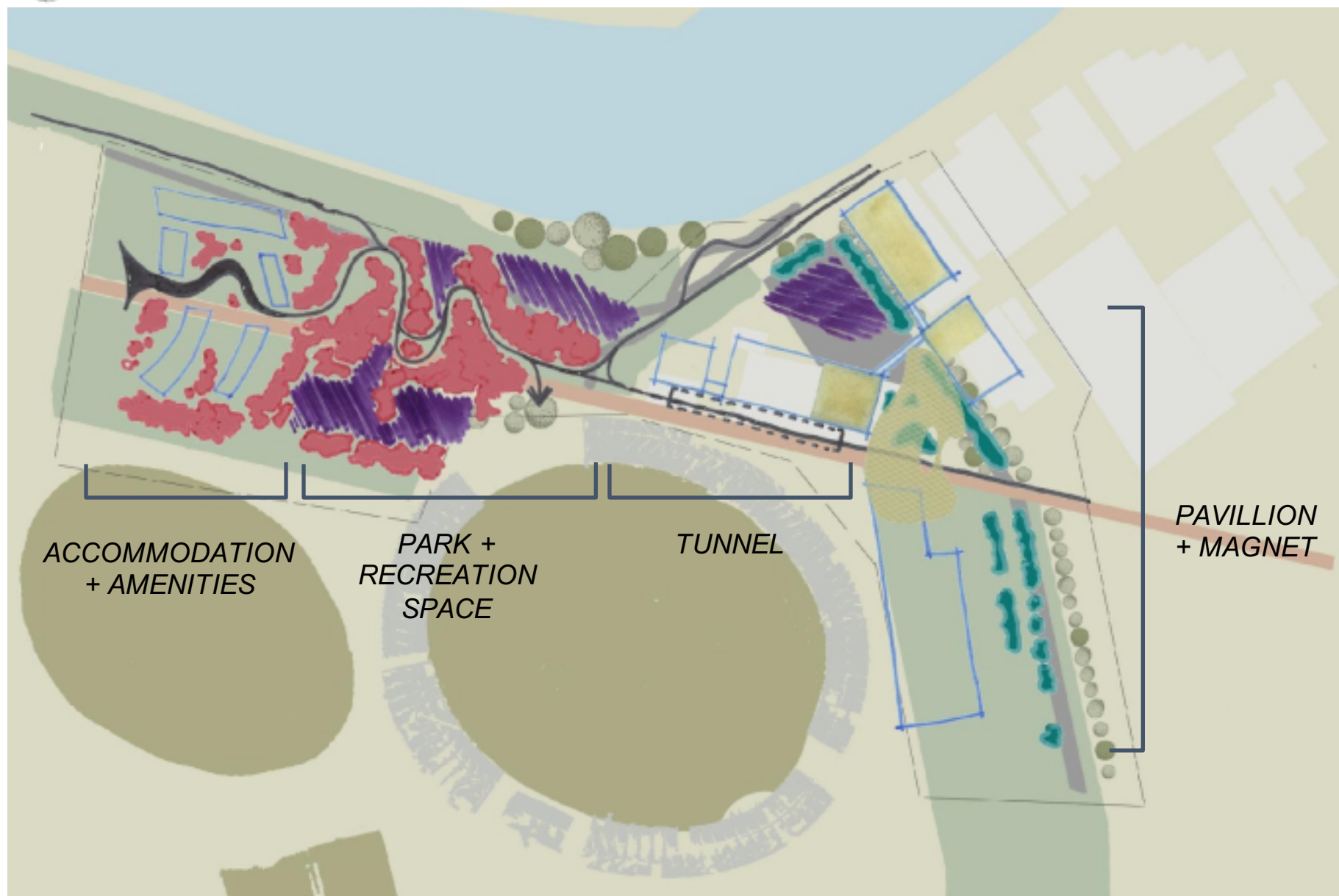
THE SITE WE ARE WORKING ON EMCOMPASSES THE UNIVERSITY OF TASMANIA'S ARCHITECTURE SCHOOL, ART SCHOOL, THE QUEEN VICTORIA MUSEUM AND ART GALLERY, AND EMPTY PLOTS OF LAND TO THE NORTH AND SOUTHWEST OF THE INVERESK CAMPUS. OUR APPROACH EXPLORES POSSIBILITIES FOR IMPROVING STUDENT WELLBEING BY CREATING A NEW LANDSCAPE FOR THIS SITE.

OUR SOLUTION WILL BE EXPRESSED AS IMAGES VIEWED BY A STUDENT MAKING THE JOURNEY THROUGH THE NEW LANDSCAPE.



CONCEPTUAL DIAGRAMS

THE NEW LANDSCAPE IS A RE-IMAGINATION OF THE UTAS INVERESK CAMPUS THAT HIGHLIGHTS THE WELLBEING OF STUDENTS, STAFF AND THE PUBLIC BY PROVIDING A UNIQUE SENSORY EXPERIENCE AT EVERY CORNER – GROWING CONVENIENCE, COMFORT AND COMMUNITY



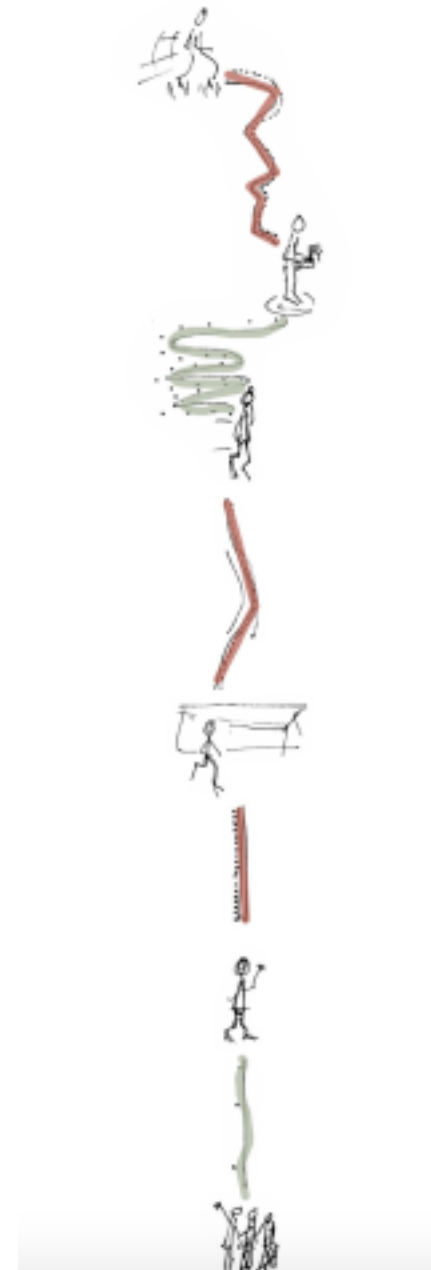
ACCOMMODATION
+ AMENITIES

PARK +
RECREATION
SPACE

TUNNEL

PAVILLION
+ MAGNET

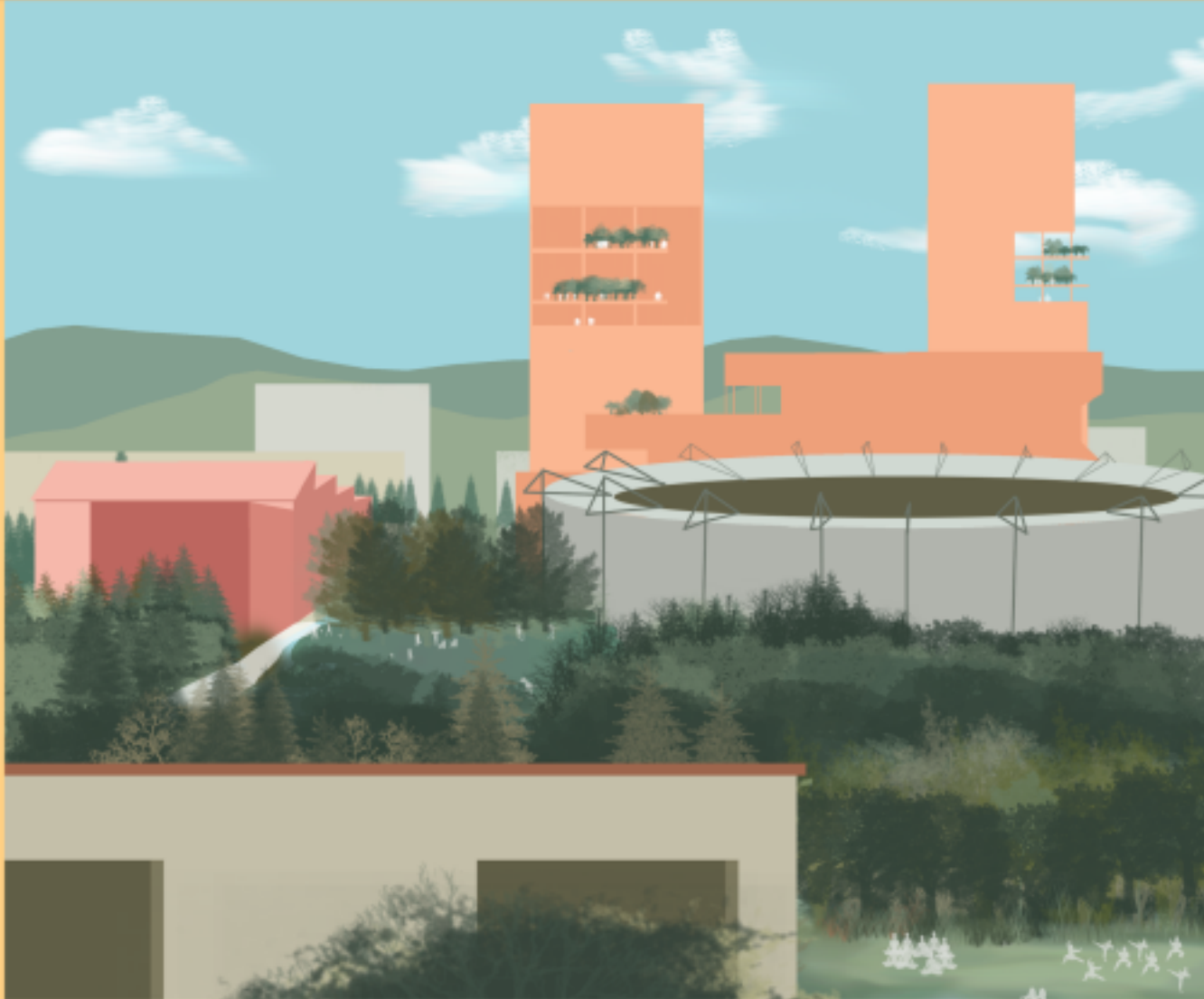
- ROOFTOP ACCESS
- NEW VEGETATIONS
- OPEN GRASS SPACES
- BUILDINGS
- PATHWAYS



CONCEPTUAL DIAGRAMS

THE LEFT DIAGRAM SHOWS THE DESIRED SOUND EXPERIENCE AND FEELING AT DIFFERENT POINTS IN THE LANDSCAPE. STARTING WITH A QUIET WALK DOWN TO A SOCIAL INTERACTIVE SPACE WHICH CONTINUES ON TO A PEACEFUL WINDING PATH THAT IS THEN ENCLOSED BY A TUNNEL FILLED WITH MUFFLED SOUNDS BEFORE EMERGING INTO THE MAGNET COURTYARD THAT IS LOUD AND VIBRANT. THE LAST ELEMENT OF THE DIAGRAM ILLUSTRATES THE CALMING EFFECT OF FRESH AIR AND REFLECTION

THE RIGHT MOVEMENT DIAGRAM DISPLAYS THE RELATIONSHIP BETWEEN SPEED OF MOVEMENT AND ELEMENTS OF THE LANDSCAPE. SHARP RED LINES INDICATE QUICKER MOVEMENT WHILE CURVED GREEN LINES ILLUSTRATE SLOWER MOVEMENT AND A SENSE OF CALMNESS.



SCENE 1.
WAKING UP TO A VIEW.

THE VIEW FROM STUDENT
HOMES, TOWARDS THE
SKYLINE OF THE NEW
CAMPUS.

VARIOUS HOUSING TYPES
THAT CATER FOR: SINGLES,
DOUBLES, FAMILIES,
SENIORS, GROUPS, GUESTS
AND RESIDENTS.

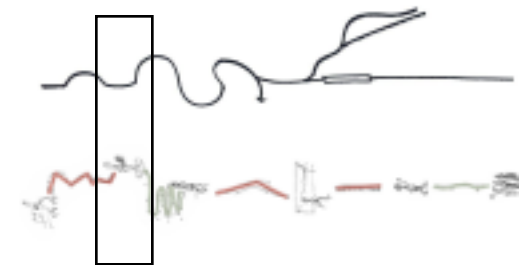




SCENE 2.
CONNECTING PEOPLE WITH
FOOD.

FREE BREAKFAST PROVIDED
EVERY WEEKEND IN A
COMMON FOOD
PREPARATION AREA ON THE
GROUND FLOOR OF THE
STUDENT HOMES. THIS
INCREASES SOCIAL
INTERACTION THROUGH
FOOD.

THE SPACE ENCOURAGES
COMMUNICATION AND
SOCIALISING IN AN OPEN
BREATHABLE SPACE.

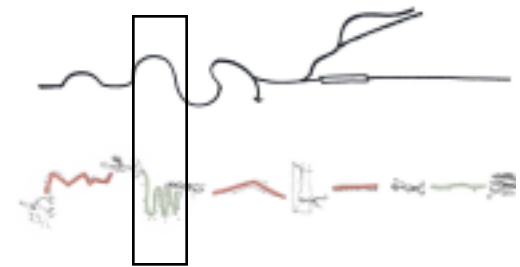




SCENE 3.
UNIVERSITY PARK ENTRANCE.

A BINDING JOURNEY
THROUGH THE PARK, THAT
WHILE IN THE PROCESS OF
TRAVELLING, PROVIDES A
CALM INCLUSION OF NATURE.

DECIDUOUS TREE COVER
ACTS AS BOUNDARIES,
MAKING PUBLIC AND
PRIVATE ENCLOSURES.

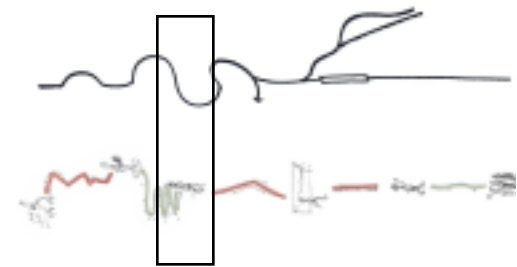




SCENE 4.
AN EXTENSION OF
UNIVERSITY PARK:
DOG PARK.

THE PARK PATH BRANCHES
OUT TO OPEN SPACES: DOG
PARK, AMPHITHEATRE,
PRIVATE AND PUBLIC AREAS.

PROVIDING A PLACE TO LET
GO AND BREATHE WITH THE
COMPANY OF NATURE.





SCENE 5.
TUNNEL THAT LEADS TO THE
MAGNET.

THE ONLY WAY IN. A
TRANSITION FROM NATURE
TO TECHNOLOGY. INTENDING
TO DISCONNECT THE MIND
FROM THE OUTSIDE AND
FOCUS IN ON THE
UPCOMING DAY.





SCENE 6.
INTERIOR OF TUNNEL
TOWARDS THE MAGNET.

WALLS ARE PADDED WITH
SOFT FABRIC, PROVIDING A
WARM EMBRACE,
NURTURING A SENSE OF
READINESS TO TAKE YOUR
DAY HEAD ON.

ARRIVING WITH CALMED
SENSES, THE MIND BECOMES
A SPONGE READY TO
ABSORB THE VIBRANCE OF
THE MAGNET AND INSTANTLY
FEEL CONNECTED AND IN
TUNE WITH THE
SURROUNDINGS.

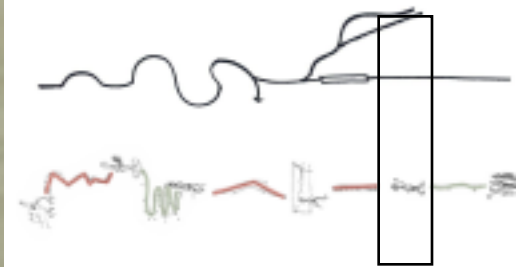


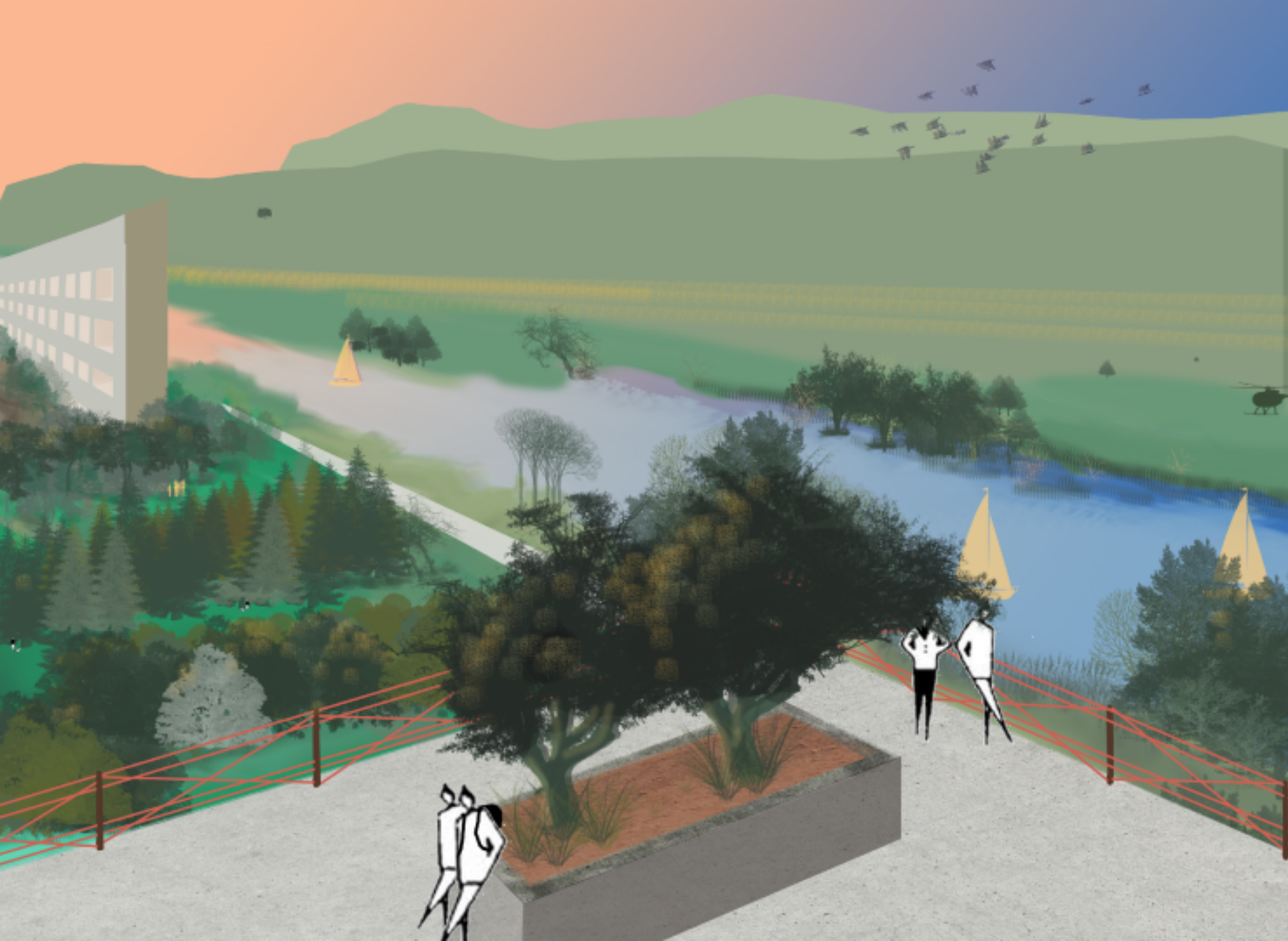


SCENE 7.
WELCOME TO THE MAGNET.

THE MAGNET CANOPY
EXPANDS AND COMPRESSES
SPACE AND CREATES
VARIOUS PUBLIC SPACES:
SHOPS, CAFES, BARS AND
SOCIETY CLUBS.

CONVENIENCE IS KEY, WE
WANT TO GROW SOCIAL
WELLBEING.





SCENE 8..
ENDING THE DAY ON THE
ROOFTOP.

ROOFTOP GARDEN AND
CONNECTIONS TO
NEIGHBORING BUILDINGS,
RATHER THAN CONFINING,
OPEN UP TO MORE
ROOFTOPS EXPANDING THE
COMMUNITY.

BBQ AREAS AND VEGETABLE
GARDENS OFFER TIME TO
RELAX, EAT AND PREPARE
FOOD.

SPECIAL GARDENS THAT
MASSAGE THE AURAL, VISUAL
AND AROMATIC SENSES, THE
ROOFTOP SPACE IS
SOMEWHERE TO PAUSE FOR
THE SUNSET AND BE WITH
LOVING FRIENDS.

