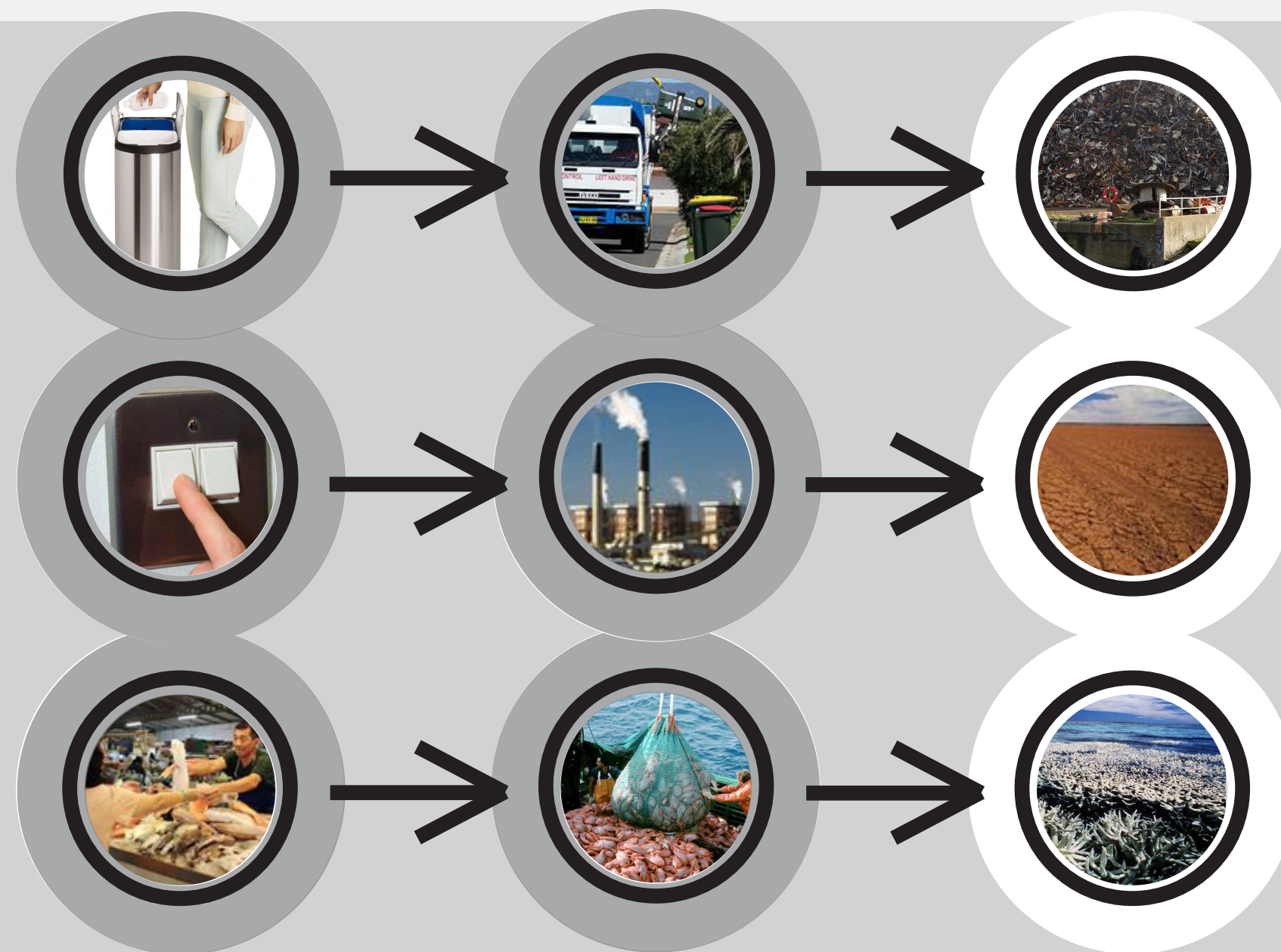


Humans, on a grand scale, are unaware of the consequences of their unconscious actions. People choose to remain ignorant of the ramifications of even the smallest of decisions made every day, and are as such inconsiderate of their effects on the environment, immediate or otherwise.

It is through this cause and effect relationship that we explore *Waste*.

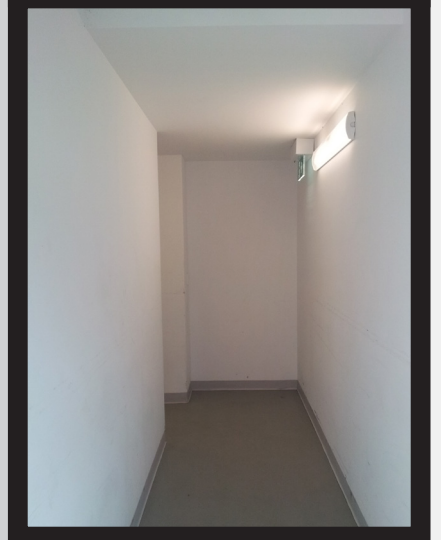
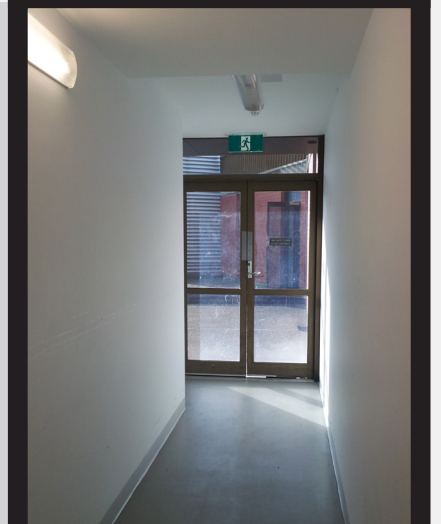
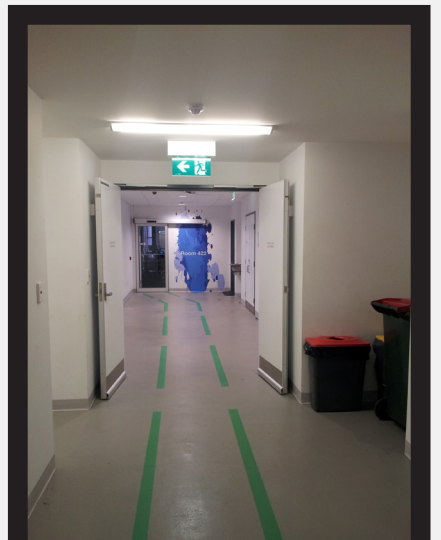


WASTE

*Waste* is to be located in an underused corridor in the Hub Central of Adelaide University.

The site was chosen as it remains a thoroughfare for students going to class as well as an entrance to the hub itself. With its low-level of awareness it becomes the perfect host to comment upon the ignorance of our actions.

The students passing through the corridor unwittingly become part of the intervention, and so *Waste* becomes theirs.



WASTE

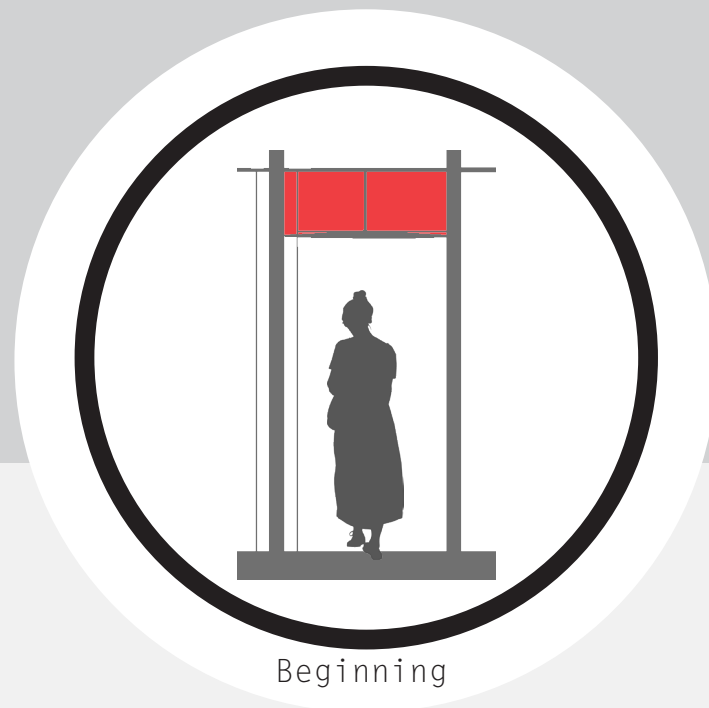
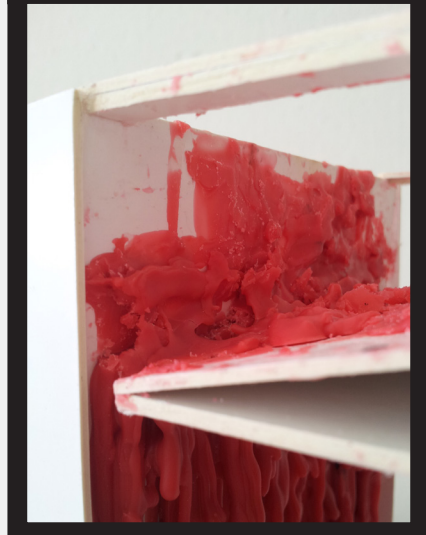
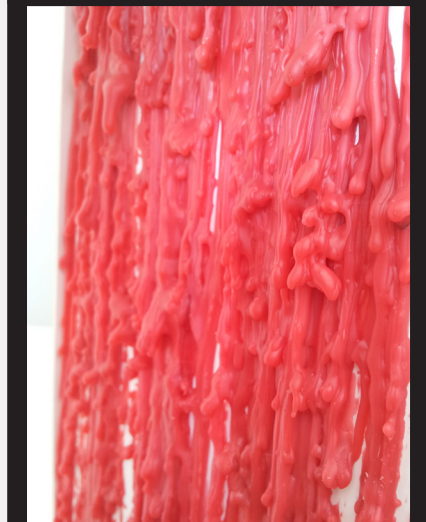


*Waste* explores the effects of the actions of an unsuspecting audience by creating a situation in which a new environment will form through the unconscious actions of some, and be changed by the conscious actions of others.

Sensors will detect the movement of people through the space, triggering the heating of a hidden wax deposit. As it is heated, it will trickle down the walls to eventually form a solid mass without any predefined form or any direct prompting from any one person.

The wax will form a new environment that forces an interaction upon the passersby by potentially creating blockages which must be manipulated.

By doing this the awareness of the hallway will be enhanced by word of mouth- a wistful hope that people will become more aware that not only do conscious actions have consequences, but every unconscious action does too. By doing this the awareness of the hallway will be enhanced by word of mouth and by fragments of wax leaving the installation on the clothing and shoes of the audience



Beginning



After one month



After three month

WASTE



